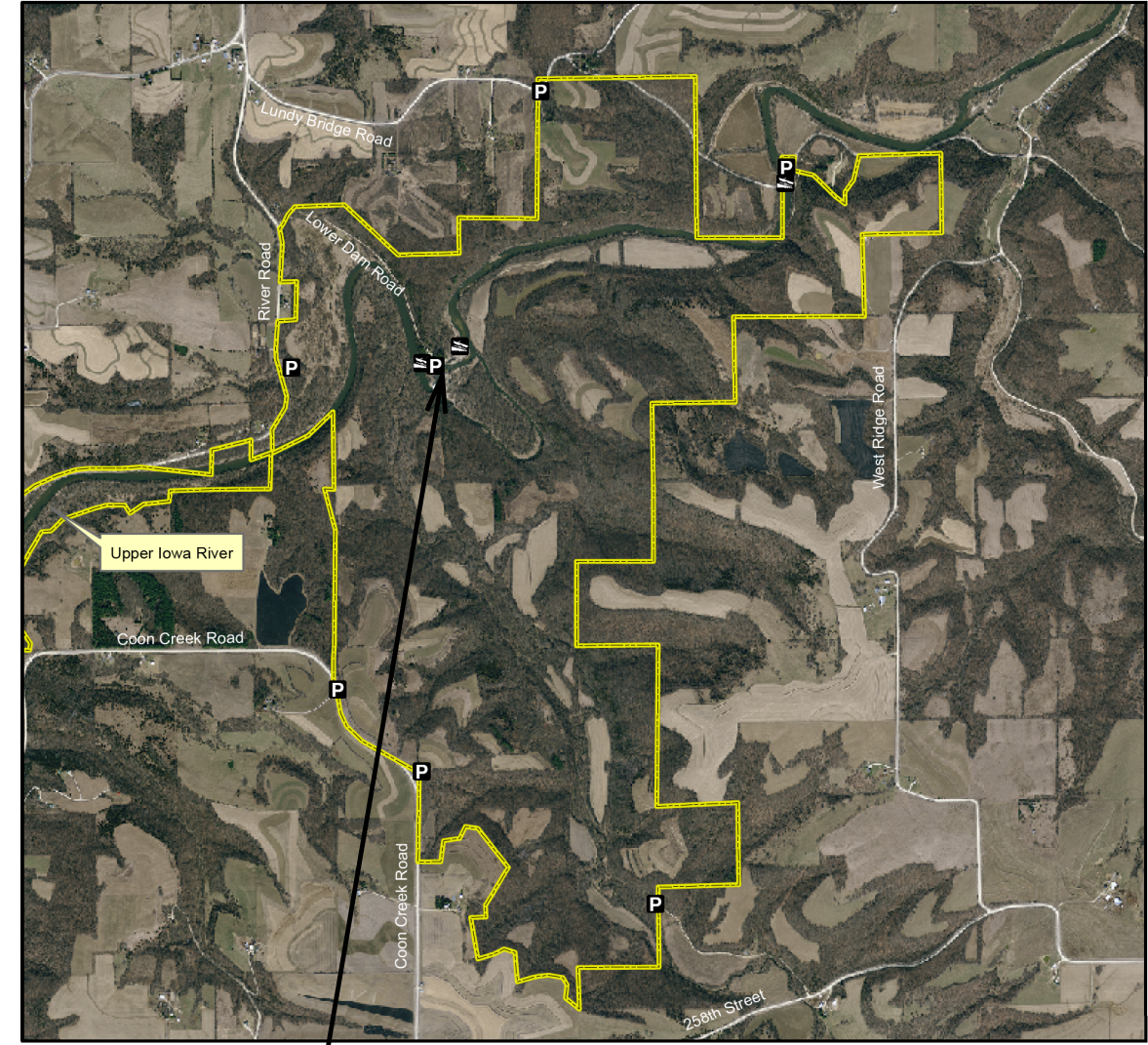


Coon Creek Wildlife Management Area



Legend

- State Areas open to hunting
- WMA Boundary
- Parking Lot
- Canoe Access
- 2010 Aerial Photography

Map Creation Date: 8/2011

DNR

Acres: 1,713

Habitat: 3/4 Timber, 1/4 Upland, Coon Creek

Species: Deer, Turkey, Squirrel, Grouse, Dove

Contact: Terry Hainfield
Upper Iowa Wildlife Unit
563-546-7960

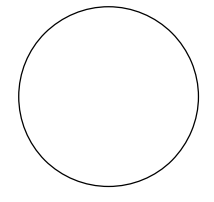
Winneshiek County, Iowa
T-98N, R-7W, Sections 2,10-11,34-36

Directions: 4.3 miles NE of Freeport on River Rd, 0.2 mile E on 143rd Ave, 1.3 miles ENE on Coon Creek Rd.

Every effort has been made to accurately depict the boundaries on this map. However, users should rely on boundary signs actually located in this area to ensure they do not trespass on private property.

PROJECT LOCATION

CONSULTANT:



IOWA DEPARTMENT OF NATURAL RESOURCES
ENGINEERING SERVICES • WALLACE BUILDING
502 E. 9TH ST., DES MOINES, IA 50319-0034



PROJECT LOCATION MAP

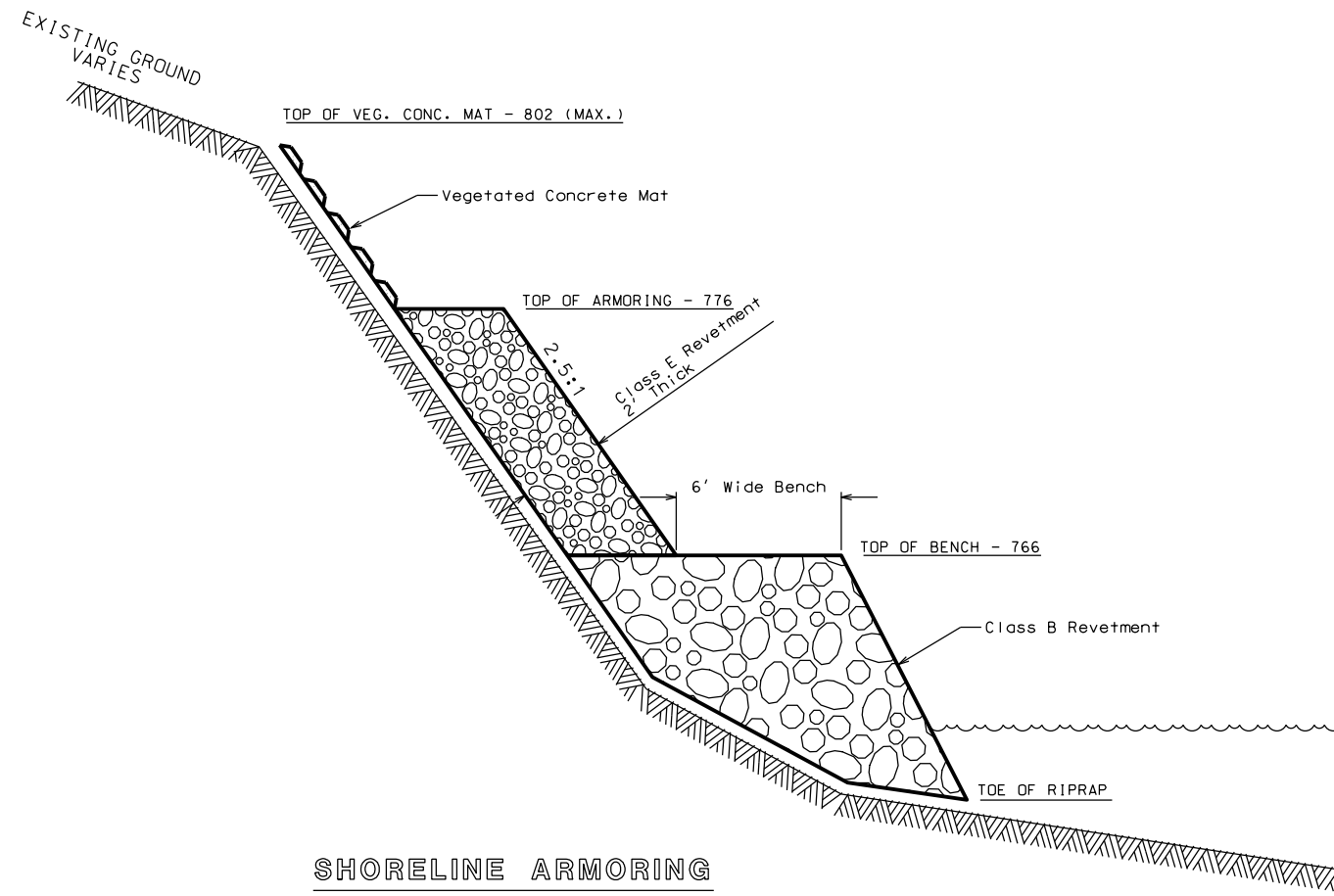
STREAMBANK STABILIZATION FOR:
COON CREEK WMA
WINNESHIK COUNTY

NO.	BY DATE	REVISION

DRAWN BY: PROJECT NUMBER:
19-03-96-04

CHK'D BY: DATE:

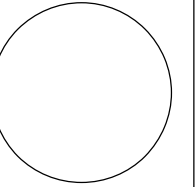
SHEET NO: **A.02**



SHORELINE ARMORING

NOT TO SCALE

CONSULTANT:



**IOWA DEPARTMENT OF
NATURAL RESOURCES**

ENGINEERING SERVICES - WALLACE BUILDING
502 E. 9TH ST., DES MOINES, IA 50319-0034



TYPICAL CROSS SECTIONS AND DETAILS

STREAMBANK STABILIZATION FOR:

COON CREEK WMA

WINNEBAGO COUNTY

NO.	BY	REVISION

DRAWN BY: PROJECT NUMBER:
19-03-96-04

CHK'D BY: DATE:

SHEET No:

B.01

